

KOHIMA COLLEGE KOHIMA

ASSIGNMENT ON  
Environmental Education

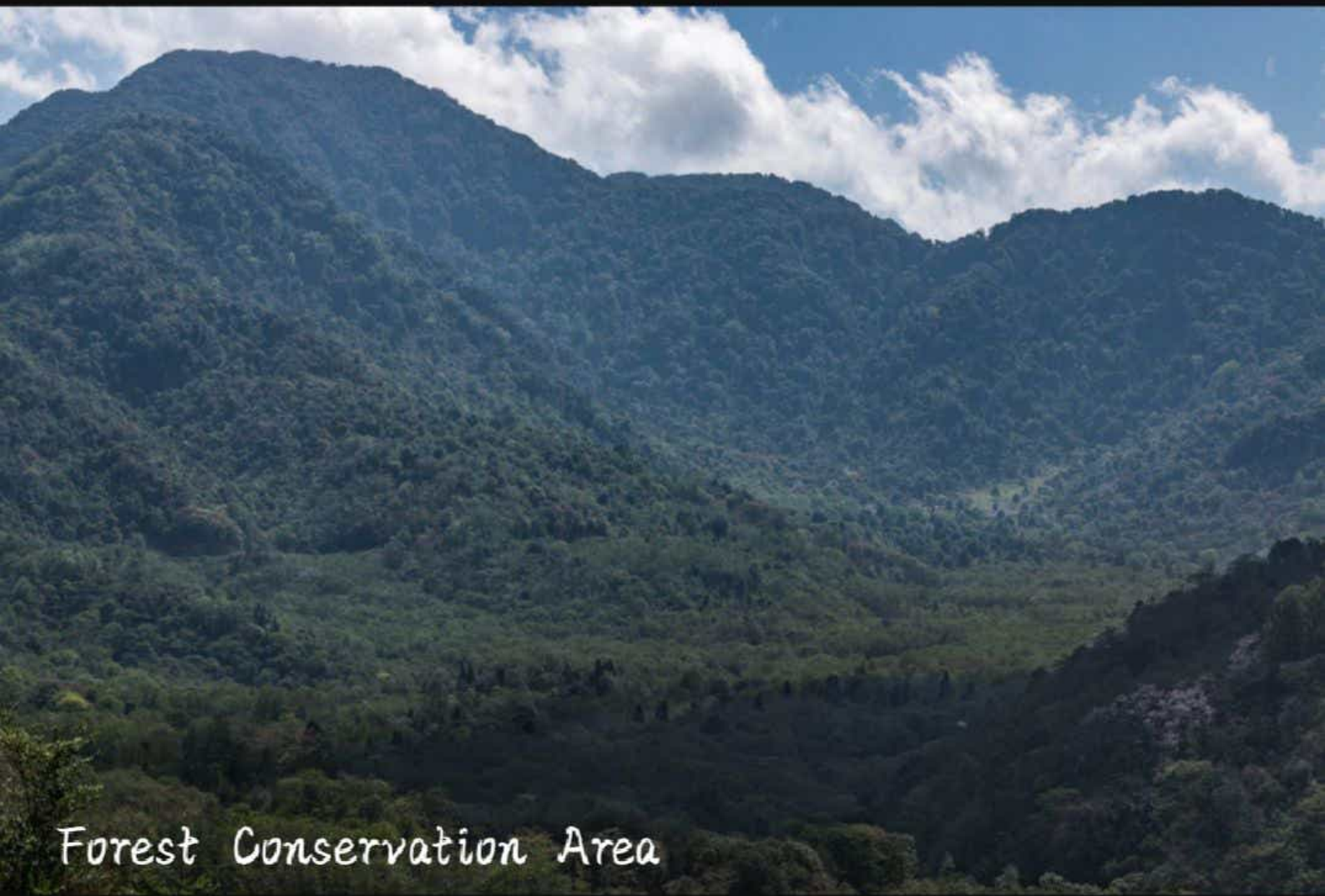
Topic: A report on forest conservation  
in village.

Submitted to  
Ma'am, Medoseno  
Environmental  
Education department

Submitted by  
Nikhota Resi  
Roll no. 71  
Sec - C  
B.A 5<sup>th</sup> sem

## CONTENT

- Introduction
- Community conserved Areas
- Community objectives of forest Conservation
- Major challenges of forest Conservation
- Advantages of forest conservation
- Measure or step taken by the local Communities
- Conclusion
- Reference



Forest Conservation Area

## Introduction

The conservation of forest is about the preservation of the forest places. The forests are a reason by any means which is known as conservation of forest.

Conservation of forest is very important as the forest play a vital role in developing the life cycle of the animals and also maintaining the balance of the ecosystem.

Conservation of forest is very important to stop deforestation.

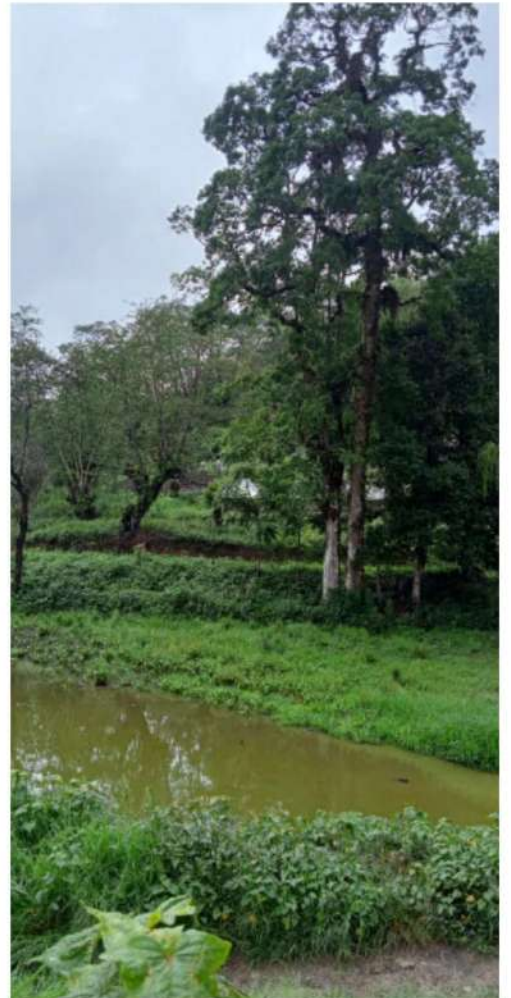
## \* Community conserved Areas

Khulazu Bawu village under Phek district of Nagaland state in India. The local community conserved two areas name 'Avüzü' (forest conservation) and 'Tizüo' (wildlife conservation)

The initiatives have been practices to conserved in different forms through it is not recognised by the government. The community and organizations like Youth organization, village council, village organization as a spontaneous reaction to address the problem of forest/environmental degradation. In this two areas it is sealed from cutting proaching

or hunting. There are multiple kinds of flora and fauna. It is based on some years of conservation so that the animals and trees could spread out from these two areas.

The organizations also organized a one-day program to look after the conservative area. It is also said that in case of suspicion the youth organization take the initiative to go at night to spy the conserved areas without informing others.



## \* Community Objectives of forest Conservation

The elders of the village were concerned that the younger generation would never see those big trees and the wildlife. So they gave out their concern to different organization to conserve an areas. The village intends this areas to be breathe breeding.

Some of the objectives are:

1. To preserve the diversity of species.
2. To maintain ecological balance.
3. To protect the external threats.
4. Religious sentiments.
5. To conserve the degraded land.



## \* Major Challenges faced by the local communities

Some of the major challenges faced by the local communities are:

1. Thinning or shifting cultivation
2. Non-Cooperation of neighbouring village
3. The hunting pressure from community and other members.
4. Other organized mafia (timber, wild meat etc).
5. Livelihood dependence.

## \* Advantages of forest Conservation

Some of the advantages of forest conservation are:

1. protect from Global warming.
2. prevents soil erosion and water cycle.
3. protect endangered species and different kinds of species.
4. It helps to maintain ecological balance.
5. protect from several diseases.

## \* Measures or step taken by the local communities

Some of the measures are:

1. Protect from fire and other natural calamities.
2. Organized and check over the forest.
3. Spy on forest from time to time or in case of suspension.
4. Cutting down of trees is strictly prohibited.
5. Poaching and hunting is strictly prohibited. If a person is found hunting in this two areas their tools like guns are taken by the govt youth organization and also they pay a fine of Rs. 5000.

## \* Conclusion

In this way, we can conclude that individuals as well as organizations can do their part in protecting the forest of the world. Knowledge about the importance of forest needs to be spread so that people become aware of the danger to everyone and everything on the earth by deforestation. People's participation in the conservation of forests is of vital importance. So we must get involved in this national task.



## \* References

1. <https://www.environmentalpollution.in>
2. <https://forest.nagaland.gov.in>
3. <https://edurev.in> → questions & what.
4. [topper.com](https://topper.com)